



Your 2014 Club Dues Our Club Officers for 2014-'15

**Happy New Year to all of our Large Scale RR Folks
Our ILSR Club Dues are now due, but,
everyone now has "OPTIONS".**

Starting now, President Jacquie Banks would like to make two options available to all members who are now paying their dues.

Option 1: You can elect to send in your \$20 Club Dues to Marion H. and you will continue to receive your 2014 Newsletter in your mailbox every-other month as always.

Option 2: You can elect to send in \$15 Club Dues to Marion H. and you will receive your 2014 Newsletter electronically via your email starting with the March Newsletter. *(Please verify your correct email address by writing it in on the **memo line** of the lower left hand corner of your check)*

Either way, you are a full fledged member and can look forward to a completely new line-up of train activities this year that you won't want to miss out on!

Speaking of membership, Jacquie would like us all to be extra friendly and outgoing, and invite **new people** that we come in contact with this year to join the **ILSR** Train Club and become active with all of us in our Club events. This is a Win/Win for you as well as for the new persons joining. Also, you will automatically get credit for next year's dues. In other words, your 2015 Club dues will be automatically paid up if you bring in a new Club member this year. *(We know that some of you*

pay your Club dues 2 years at a time. Not to worry, your 2016 Club dues will be credited as paid.)

Unfortunately, we have had several good members pass away in the last two years. This, of course, results in a drop in Club membership. By no means am I suggesting a "dooms-day of reckoning" in the near future of our Club. We are just trying to be realistic about the expectations we hold for ourselves in our Train Club. With every member contributing in a positive way, I have no doubt that we can remain a positive influence in the Large Scale Train Hobby for years to come. I would hate to think otherwise.

The backbone of every organization is it's membership. They make things happen for the benefit of their organization. If we all step up to the plate on a regular basis, you could be amazed!

In This Issue

| | |
|---|--------|
| Club Dues and Membership Option | Page 1 |
| Meet our Club Pres. & V.P.; FOAMERS Pg. 2 | |
| End of Year Meeting (Noblesville) | Page 3 |
| End of Year Meeting (Noblesville) | Page 4 |
| Tunnel Portal Project (<i>Rex Bowman</i>) | Page 5 |
| Tunnel Portal Project (<i>Rex Bowman</i>) | Page 6 |
| Watts Train Shop | Page 7 |
| 2014 Club Event Calendar | Page 8 |

MEET OUR 2014/2015 ILSR CLUB PRESIDENT & V.P.



President **Jacquie Banks**



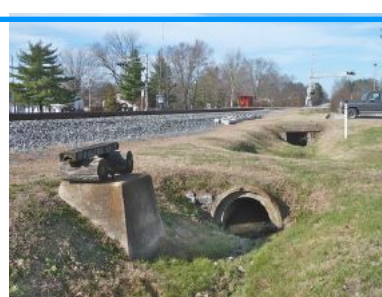
Vice President (Programs) **James Driesbach**

Thanks to all Club Members who returned your election ballots. Your votes were unanimous.

Jacquie has been involved in our ILSR Club for ten years now. She attends most Club meetings and works hard along side her husband Randy, to set up and operate their G Scale Circus on the Modular Division's display several times a year. During the summer, Jacquie assists in keeping their backyard "Sparrow Flats Railroad" looking and running smoothly.

James has been involved in our ILSR Club for seven years. This is James' 2nd term serving our Club as "Programs V.P." James also is active with our Club's Modular Division as well as having a Large Scale Railroad operating in the attic of his and Donna's Greenfield home.

Our Club is very fortunate to have a core of individuals to provide leadership and dedicated effort to make things happen in our ILSR Train Club. With everyone's support, I know we can look forward to sharing a growing and rewarding "love affair" with trains and the people who operate them. - Bud



Nancy and I had Thanksgiving with family in Tennessee. Returning home, we drove thru the small town of Wartrace, TN. (located on the CSX Mainline between Nashville and Chattanooga.

Here in Wartrace was a Photo Op. I couldn't pass up. Someone has constructed a "RR tie bench" just 15 ft. from CSX tracks for "FOAMERS ONLY". Ya'll know what that means! (FOAMERS - People who foam at the mouth at the sight or sound of a real train)

END OF YEAR MEETING

STONY RIDGE CLUBHOUSE

SAT., NOVEMBER 16, 2013



Our Train Club wrapped up a very successful year with an outstanding meeting of appreciation, future plans for the ILSR Club, future plans of Large Scale Train Manufacturers and, of course, a

mind-boggling array of finger food, appetizers, deserts and beverages. (including hot cider) A special word of appreciation needs to be passed out to our outgoing President **David Palmetter** and his wife **Judy** for arranging for and setting up their subdivision's Clubhouse for our use on this day. Also, a special thank you to **Jeff Carter** for setting up his DVD projector and screen to show our Club's DVD show "All The Livelong Day". This movie is always a big HIT, and definitely worth seeing many times. **James Driesbach** announced several ideas he is working on for new programs and open houses during our Summer months this year. **Marion Hensley** gave a treasurer's report. All bills are paid and we are still solvent!

Chris Schultz was our guest speaker. Chris has been in the train hobby for a number of years and is in the process of opening his own train store in the Dayton, Ohio area, hopefully before summer of '14. He had much to share with all of us in his personal perspective of the Large Scale train hobby. Chris had a self assured confidence about people being active in G Gauge. (3% increase in G Gauge sales in 2013 over the year before) Chris confirmed what we already suspected - that U.S.A. Trains and Bachmann are now the primary companies in Large Scale trains. Marklin/LGB is trying to bring products back, but it will be a slow process. Hartland has specialized products that are of excellent quality. Chris further thinks that some Aristo products may be manufactured by Bachmann in the future since Bachmann purchased the China factory. Chris wrapped up his talk with several minutes of question and answer time. I personally felt that everyone in attendance got a lot of positive thoughts about the train hobby. Thanks again Chris for coming to Indiana to our Club meeting and sharing your perspective on the Large Scale hobby.

Thanks **David** for all of your good leadership as Club President these past two years. And lastly, thanks to **everyone who came out and participated in our "End Of The Year" Club Meeting**. A good time was had by all!



David thanks everyone for helping make his two-year Presidential term a success.



James has some open house commitments already for next summer. Stay tuned!



Featured speaker (*and ILSR member*) **Chris Schultz** is giving us an optimistic, insider's view of the G Scale industry and information about his plans for a retail store in Dayton, Ohio.



Club Members, both new and old, always enjoy a chance to get together and chat. Obviously, the more we get together, the better acquainted we become with one another and the more we can count ourselves as “friends”. Sure, our trains are **great** and a source of both **pride** and **fun**. But the same can be said for the great folks we have to **know** and **interact with** when we get together at a Club meeting.

TUNNEL PORTAL PROJECT

- by



Rex Bowman

When I started constructing my J.A.M.A Railroad in 2004, I wanted to include a tunnel as one of its features. After the railroad was built, I researched the internet to find some examples of tunnel portals I might use.

I found a decent railroad tunnel portal I thought would be a good fit and one that I could make from wood. (I had lots of scrap oak pieces laying around due to several wood working projects I had done.) My problem was the wood portals deteriorated so badly that I had to make a second set 4 years later. This past spring, even those were in bad shape, so I decided it was time to make tunnel portals which would last for years to come. These would be made out of concrete. Here's how I created the mold.



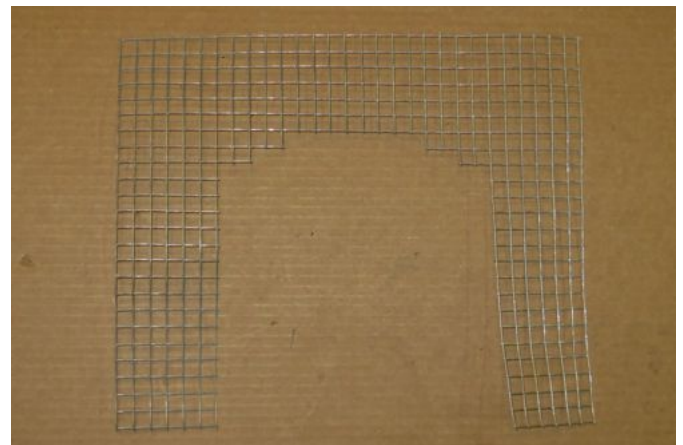
(1) Using an old portal as a pattern for a mold, I cut two $\frac{3}{4}$ inch plywood piece boards (13 inches high by $15\frac{1}{4}$ inches wide) to form a strong base for my mold. I then glued and clamped the two pieces of wood together to form a strong bottom of my mold.



(2) Next, using an old tunnel portal as a pattern, I cut out the portal opening shown here, also using $\frac{3}{4}$ inch plywood. (13 inches high and $15\frac{1}{4}$ inches wide) I centered the portal opening on the base and attached it in place with four - two inch screws.



(3) I finished "boxing in" my concrete mold by cutting strips of wood 2-3/16 inches wide and attached them to the sides of the base using $1\frac{1}{4}$ inch screws.



(4) Once the mold was complete, I cut some wire mesh to use as reinforcement. By using concrete mix, the

Welcome A New Member

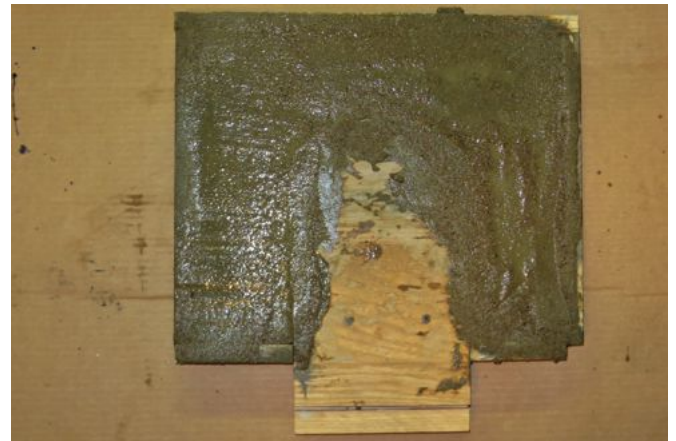
We would like to officially welcome new member Andrew Jones . . . Kokomo, IN. We look forward to getting to know you and are glad to have you "on board".

(Tunnel Portal Project - continued)

mesh may not have been necessary, but I decided to error on the side of caution. (Long rods, nails, etc. probably could be used in place of mesh if one wanted to reinforce a little differently.)



(5) I filled the mold about halfway up, then inserted the wire mesh in place. Then, I finished filling the tunnel portal mold with concrete mix.



(6) I tapped the sides of the mold with a hammer to remove any air pockets that might have formed. After a day of drying time, I unscrewed the mold base and removed the new tunnel portal. Then, after cleaning up the mold, I reassembled it and repeated the whole process over again. *(remember, we need 2 portals, one for each end of the tunnel)*

All that was left to do now was to give two coats of gray paint to the portals and then install the finished east and west portals on the railroad.



(7) The Railroad is now re-opened to rail traffic, and the good news is - **NO MORE ROTTEN WOOD!**



WATTS TRAIN SHOP

After over 50 years in business on Hunt Club Road, Watts has sold the property, and is now in a new, temporary location just south of the Dairy Queen in downtown Zionsville. Truthfully, I never purchased a Christmas Tree from Watts because, for me, it was a place to look at and purchase exciting G Scale Trains. (and we all did plenty of that!)

Christmas holds a lot of magical charm during December at Watts, and I'm happy they are still very much in business downtown. I had

the opportunity to visit their new store the 2nd weekend in Dec., and it was quite a familiar scene of folks loading Christmas trees on top of their cars and driving off.

Space wise, it is sorta like going from a large, spacious building down to a one-room school house. But remember, this is only a temporary location.



ILSR Club Officers

President - Jacquie Banks

7621 Fall Creek Rd.; Indianapolis
jacrabit@att.net 46256
 (317) 849-9501

V.P. (Programs) - James Driesbach

453 West Osage St.; Greenfield, IN.
jddriesbach@aol.com 46140
 (317) 529-2561

Newsletter Editor - Bud Hunter

1214 Morningside Dr.; Lebanon,
nhunter@mymetronet.net IN. 46052

Treasurer/Secretary - Marion Hensley

11675 Atlantic Rd.; Fortville, IN.
mchmjh@embarqmail.com 46040
 (317) 485-4140

Membership - Jeff Carter

(317) 253-9310
jcchome@sbcglobal.net

Website - David Palmeter

(317) 770-4919



On this sunny Sat. morning, I saw 2 customers purchasing some LGB rolling stock. The display RR is back in operation and (see Pic. at left) that work bench - that is where Ross still does his "repair jobs".

2014 Club Event Calendar

Now thru January 19

JINGLE RAILS

Eiteljorg Museum (daily)

Jan. 4 & 5 Great Train Expo; Indiana State
Fairgrounds; ILSR Modular Display

May 4 & 5 Orchard in Bloom Indianapolis

May 4 - 10 National Garden Railway Convention
Tampa, Florida

June 14 Berries & Bloom Festival
Depot Park - Upland, IN.

to be arranged

Four Club Tour - Columbus, OH.



Indiana Large Scale Railroaders
1214 Morningside Drive
Lebanon, IN. 46052